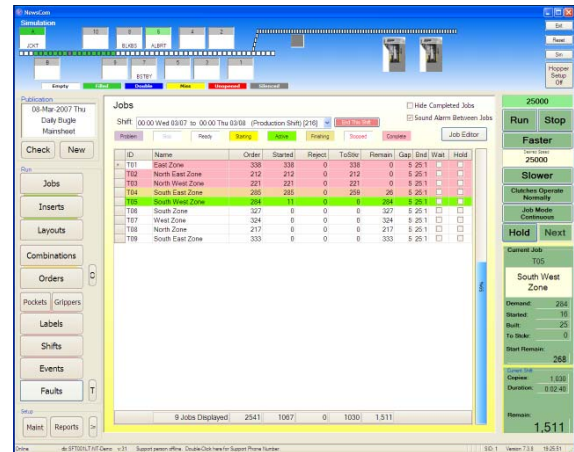


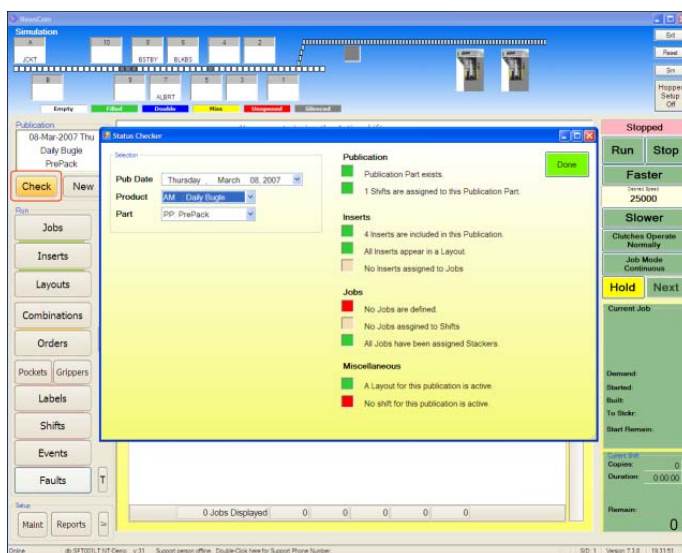
NewsCom® is a sophisticated inserter manager that provides product integrity by tracking misses, doubles, rejects, and unopened jackets.

Features:

- Start, stop and then restart runs.
- Insert Feathering and Anti-Feathering.
- Hopper Backups.
- Hopper Grouping (Alternating).
- Mechanical half-speed hoppers
- Support for Sticky-Note Applicators.
- Alter and re-sequence jobs while running.
- Alter hopper assignments while running.
- Multiple jobs can be run simultaneously.
- Manually override sensors.
- Hopper Setup mode.
- Advanced Hopper Runout.
- PC can be locked down and protected.
- Functions can be limited to specific operators.
- Marquee message display shows current status and important messages.



NewsCom® was built from the ground up to be easy to learn and easy to use.



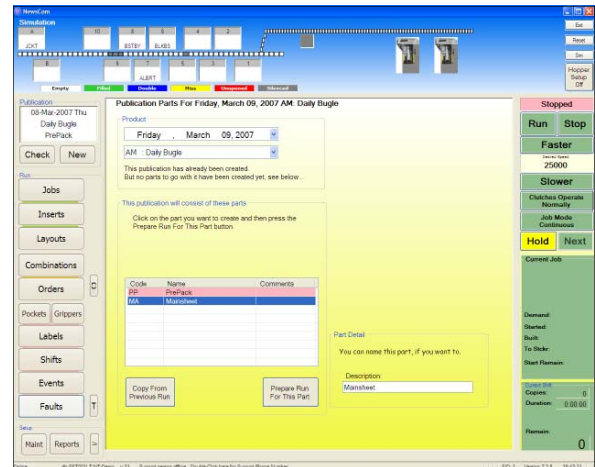
Typically, a new site is up and online with new operators setting up and running NewsCom®, without assistance, after just two production runs.

A check function (shown at left) quickly shows the operator what tasks have been completed and what tasks have yet to be done in order to complete the setup for a production

NewsCom®'s internal data architecture is designed to handle your most complex distribution requirements including, but not limited to:

- Multiple publications.
- Multi-part publications.
- Multiple distribution maps (schemes).
- Insert versioning.
- Inserts can span publications.
- Spreading production runs across shifts.
- Area Layers (Home Delivery, Single Copy).

The Job Builder feature allows you enter the data in the way the data is actually supplied. Instead of manually creating jobs and assigning inserts by reading several sheets of paper, you can assign inserts to distribution areas and have NewsCom® build the jobs automatically.



Job Summary Report											R001			
Daily Bugle / Mainsheet														
Thursday, 08 March 2007														
Job ID	Job Name	Start Time	Duration	Per Hour	NUM	Net Copies	Inserts	Demand	Built	Delivered	Unopen	Misses	Doubles	Rejects
T01	East Zone	03/08 15:49:59	01:04	19,013	2	338	338	338	0	0	0	0	0	0
T02	North East Zone	03/08 15:50:48	00:44	17,345	2	212	212	212	0	0	0	0	0	0
T03	North West Zone	03/08 15:51:17	00:45	17,680	2	221	221	221	0	0	0	0	0	0
T04	South East Zone	03/08 15:51:47												
T05	South West Zone	03/08 15:52:27												
T06	South Zone	01/03 00:00:00												

Insert Report										
Daily Bugle / Mainsheet										
Thursday, 08 March 2007										
Insert Name	Type	Jacket	Page Count	Quantity Required	Misses	Doubles				
Alberts	Unspecified	False	1	1,119	0	0				
Best Buy	Unspecified	False	1	651	0	0				
Blockbuster Video	Unspecified	False	1	771	0	0				
Jacket	Unspecified	True	1	2,541	0	0				

Event Log Report		
Sub Type	State	Description
R	CLUTCH	Hopper 12 Cl
R	CLUTCH	Hopper 12 In
R	CLUTCH	Hopper 11 Cl
R	CLUTCH	Hopper 11 In
R	CLUTCH	Hopper 10 Cl
R	CLUTCH	Hopper 10 In
R	CLUTCH	Hopper 9 Cl
R	CLUTCH	Hopper 9 In
R	CLUTCH	Hopper 8 Cl
R	CLUTCH	Hopper 8 In
R	CLUTCH	Hopper 7 Cl
R	CLUTCH	Hopper 7 In
R	CLUTCH	Hopper 6 Cl
R	CLUTCH	Hopper 6 In

Today's advertisers demand more accountability than ever. NewsCom's ever-expanding set of reports will fulfill your needs.

NewsCom® stores data at the individual package level. That means information about each and every newspaper that exits the inserter and is stored. Detail data is typically kept for 10 days and summary data is kept on file for 30 days.

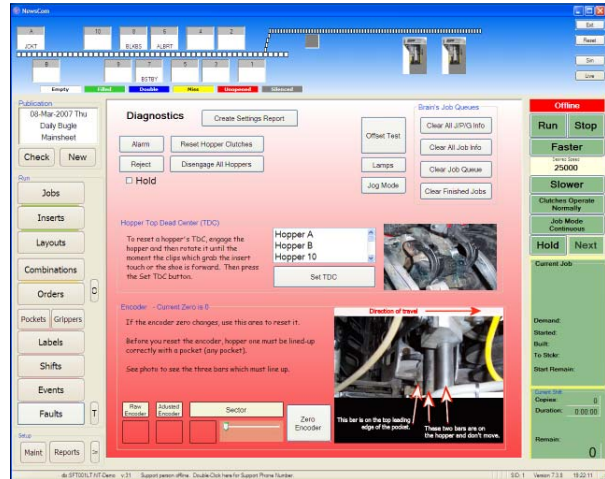
Your database is automatically backed up regularly and purged of old data to keep it running efficiently.

The event log provides exhaustive detail on the events that occur during a production run. In addition, a robust sorting feature allows you, and NewsCom® support personnel, to quickly locate important events.

NewsCom® contains a built-in support chat window, built-in diagnostic functions with clear and easy to follow steps, and built-in system upgrade functions to keep your system up to date.

New algorithms make hopper timing-issues nearly non-existent and manual override functions allow you to continue running when certain hardware failures occur.

With a subscription to the NewsCom® REMOTE SUPPORT PLAN, help is just a phone call away, around the clock.



NewsCom® is well documented.

- The System Specification Manual contains important information for your technical staff prior to installation.
- The Installation / Training Manual tells you exactly what to expect during the training phase.
- The Operations Manual explains the functions and features of the system.
- The Technical Manual provides your technical support team with detailed maintenance and support information.



Inserters Control upgrades are quick and straight-forward.

Inserters hardware and I/O conversion takes approximately two days. Your old I/O is removed and replaced with newer I/O.

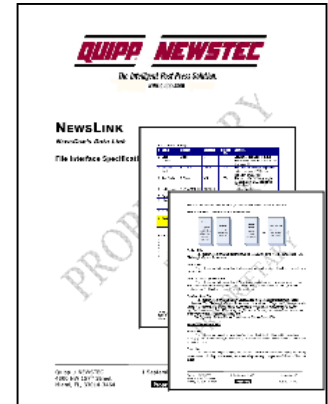
Upgrades of previous versions of NewsCom® can occur in as little as a single day.



NEWSLINK

The NEWSLINK module allows NewsCom® to receive Advertising and Circulation information from your front-end systems. The interface is designed to allow you to import data at various levels depending on your needs. This allows you to choose whether to perform particular functions in your systems or within NewsCom®.

The interface is well documented and clear examples are provided for each type of file.



NEWSLABEL

NEWSLABEL allows NewsCom® to print labels on individual packages before they are bundled. Files containing addresses are linked with inserter jobs to automate the production of a TMC product. When combined with NEWSSTACK, a stacker is controlled to create bundles that follow embedded information for postal sortation.

NEWSSTACK

NEWSSTACK allows NewsCom® to control one or more downstream stackers and keep your bundle sizes in synch with your inserter jobs during runs with multiple bundle sizes. When utilized with Quipp® stackers, nearly every setting in the stacker can be set from within News-

NEWSWRAP

NEWSWRAP enables NewsCom® to print labels on your bundles.

NEWSGROUP

NEWSGROUP allows you to manage more than one NewsCom® system from a central location.

NEWSCOM REMOTE SUPPORT PLAN

A subscription to the NewsCom® REMOTE SUPPORT PLAN provides your operations team with round-the-clock software support and software upgrades for one year.