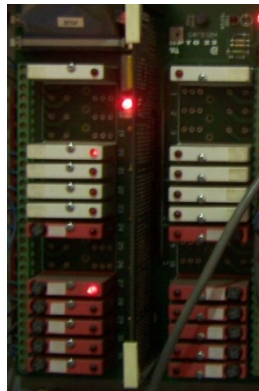




PAMUX Indicators (things to look for)

This guide will help you determine if your system utilizes the PAMUX interface to the Opto-22 I/O and will give you a clearer sense of what photos will help us determine this. The presence of a ribbon cable everywhere is a good indicator that PAMUX is in use.

PAMUX is often used with Opto-22 brand I/O.

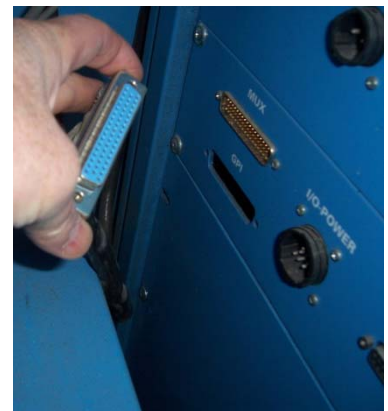


We're looking for a flat ribbon cable connector from the controller (PC or other) to the I/O system.



Most often the connector looks like the one on the left.

In some rare occasions, such as on the outside of a computer cabinet, it can look like the one on the right.



These are photos of some PAMUX installations. You will notice they are all slightly different, and yet similar.

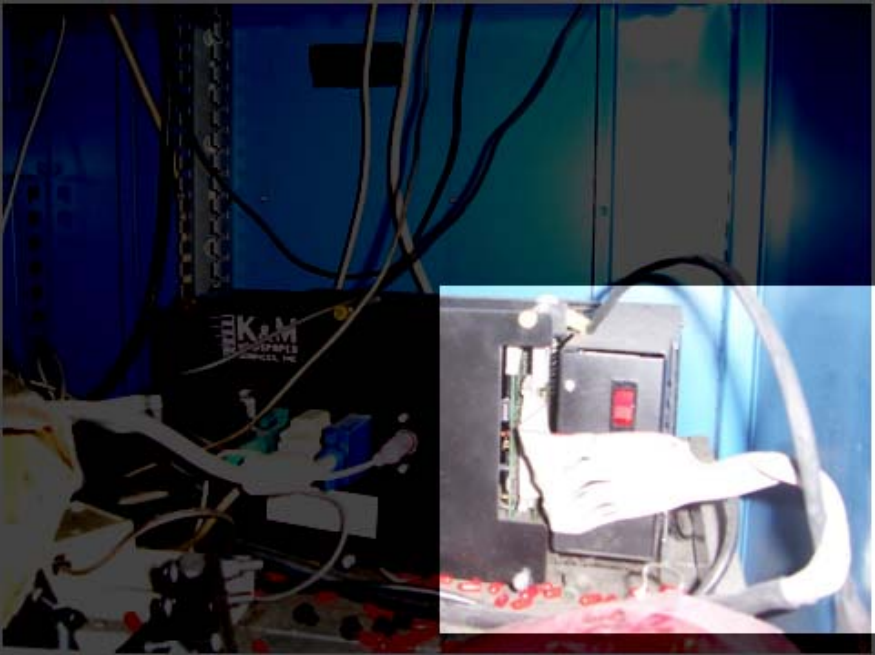
PAMUX CABLE ON THE BACK OF A PC



PAMUX Cable into a controller



PAMUX CABLE (OLD AND WORN) INTO A DIFFERENT CONTROLLER



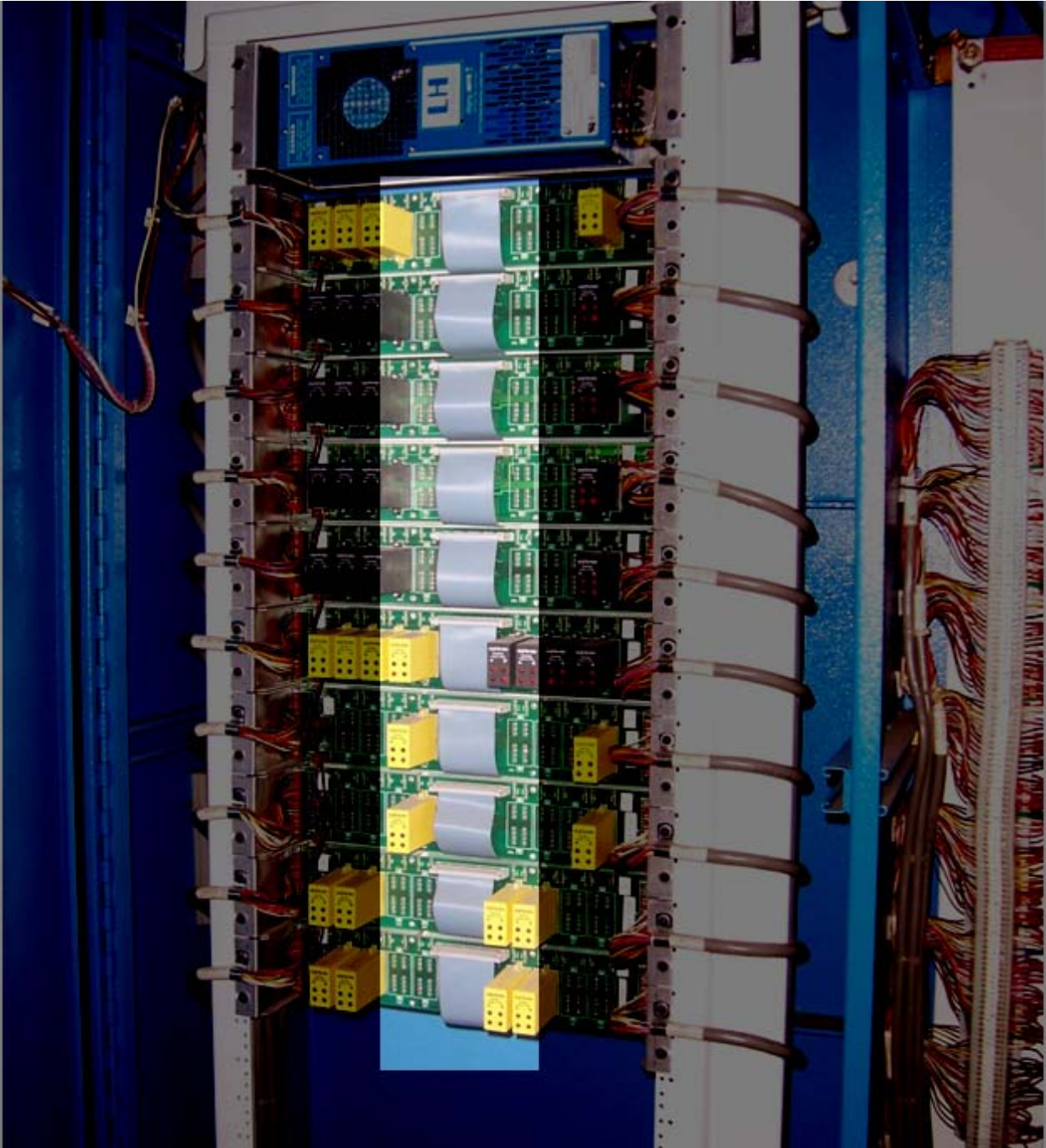
PAMUX CABLE INTO A CONTROLLER



PAMUX CABLE INTO THE BACK OF A COMPUTER ENCLOSURE



PAMUX CABLE TYING TOGETHER ALL OF THE OPTO-22 IO BOARDS.



PAMUX CABLE THAT GOES FROM THE I/O BACK TO THE CONTROLLER/COMPUTER

